

Quick Start Guide

Contents

Contents	1
IDS Quick Start	2
STEP 1: Insert VCM DVD into DVD Drive.	2
STEP 2: Install IDS by select the IDS icon on the left side of the screen.	2
STEP 3: Install Calibration files by selecting the Calibration icon on the dash panel.	2
STEP 4: Boot VCM (Vehicle Communication Module).	2
STEP 5: Start IDS by double clicking the IDS icon on the desktop	2
STEP 6: Start new session or open a previous session to work with	2
STEP 7: Diagnose Vehicle.....	3
STEP 8: Connect the VMM for Measurement Tools.....	3
STEP 9: Internet Activation	3
STEP 10: Questions.....	3
Steps to setting your user type: IDS requires all users to have Administrator privileges	4
Steps to setting your user type as an Administrator:.....	4
Adding a User as Administrator:.....	4

Quick Start Guide

IDS Quick Start

STEP 1: Insert VCM DVD into DVD Drive.

- If you do not see the screen in fig. 1 within 10 seconds, do the following:
 - Double click My Computer on your desktop
 - Double click on your DVD drive
 - Double click the 'Launch.exe' file

STEP 2: Install IDS by select the IDS icon on the left side of the screen.

- Hover over any of the icons to see a brief description of the item to be installed. The description will appear on the right side of the screen (fig. 2).
- After installing IDS, return to dash panel.

Dash Panel

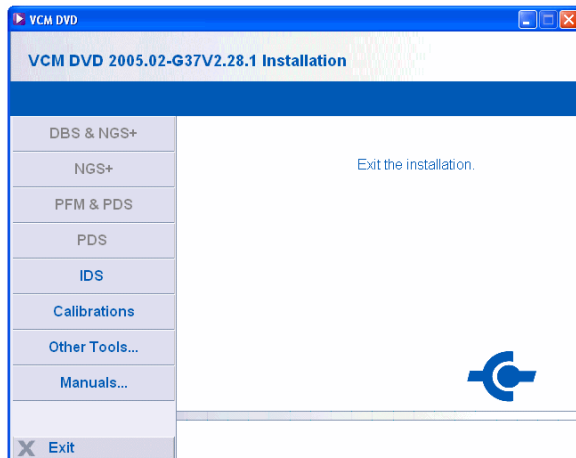


fig.1

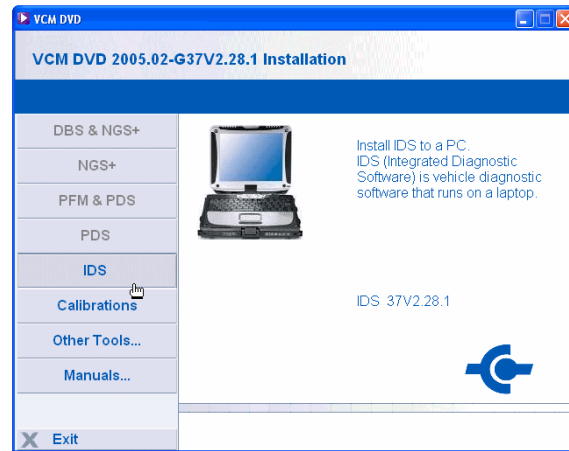


fig.2

STEP 3: Install Calibration files by selecting the Calibration icon on the dash panel.

STEP 4: Boot VCM (Vehicle Communication Module).

- Connect VCM to vehicle by connecting the 16-pin DLC cable between the vehicle and VCM.
- Connect the VCM to the laptop using the Ethernet-USB Host Cable (H-406). Two H-406 cables are included in IDS kit. Both the VCM and VMM use this cable.





STEP 5: Start IDS by double clicking the IDS icon on the desktop.

STEP 6: Start new session or open a previous session to work with

- Automatic Vehicle ID – Select the vehicle icon.



Quick Start Guide

- ❑ Open Previous Session – Select the vehicle icon (above). Next, select the vehicle information screen 
- ❑ Manual Vehicle ID – Select vehicle icon , then 'Manual Vehicle Entry' from the menu.

STEP 7: Diagnose Vehicle

- ❑ The VCM can be used to perform many link-based tests including Datalogger, SelfTest, read CMDTC's, Program Modules, Power Balance, and many Service Functions.
- ❑ The VMM is needed to perform tests requiring measurement tools including Fuel System Test, Oscilloscope, Digital Multi-meter, and Ignition System Test.

STEP 8: Connect the VMM for Measurement Tools

- ❑ Connect the VMM to the laptop using the H-406 (identical to VCM cable)
- ❑ Connect the Battery Cables to vehicle battery.
- ❑ See IDS Hook Up Screens for additional cables needed. These screens will be displayed as needed throughout the tool. See figure 3.

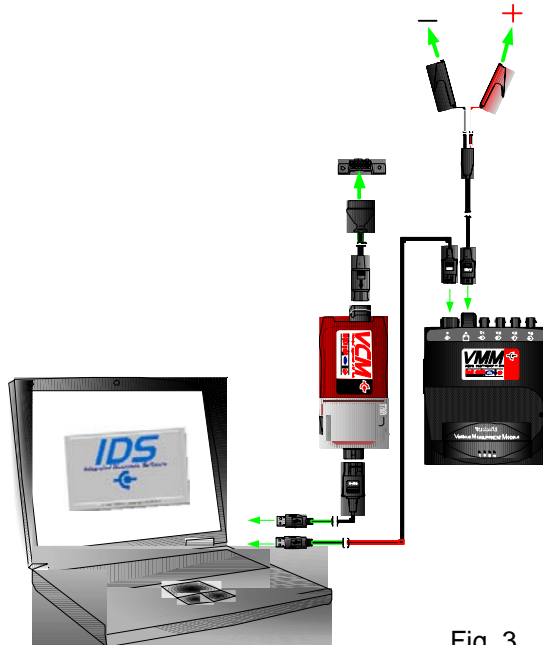


Fig. 3

STEP 9: Internet Activation

- ❑ See IDS Activation Guide for steps to set up your Internet connection. The IDS Activation Guide can be found in the IDS Kit.

STEP 10: Questions

- ❑ If you have questions on basic IDS operation, see additional documentation in your IDS Kit.

Quick Start Guide

Steps to setting your user type:

IDS requires all users to have Administrator privileges

Steps to setting your user type as an Administrator:

- Click start
- Control Panel
- Select User Accounts (Fig. 1)
- Create an Account
- Type a name for the new account
- Select Computer administrator and Create Account (Fig. 2)

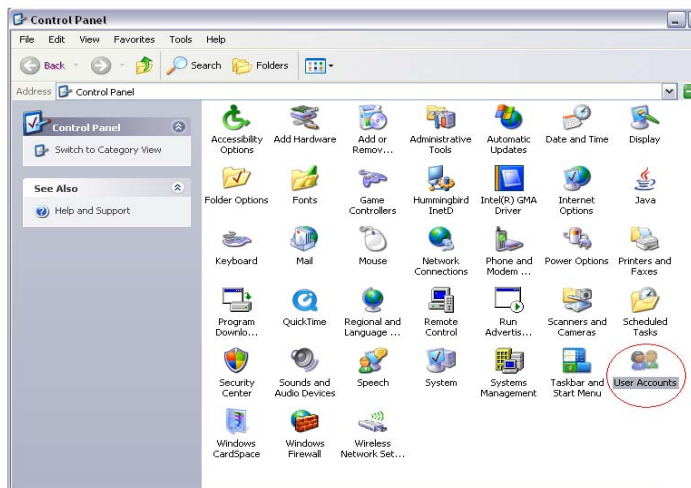


Fig. 1

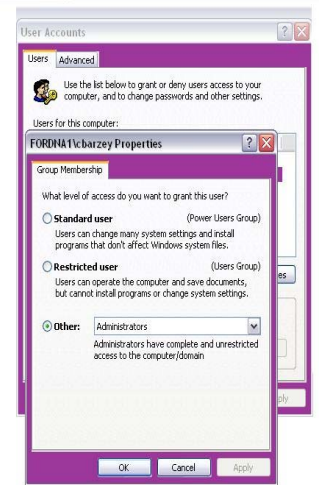


Fig. 2

Adding a User as Administrator:

- Click Start
- Control Panel
- Select User Accounts (Fig. 1)
- Click Add (Fig. 3a/b)
- Type user name
- Type domain name of computer
- Select Other for Administrator (Fig. 4)

Quick Start Guide



Fig. 3a



Fig. 3b

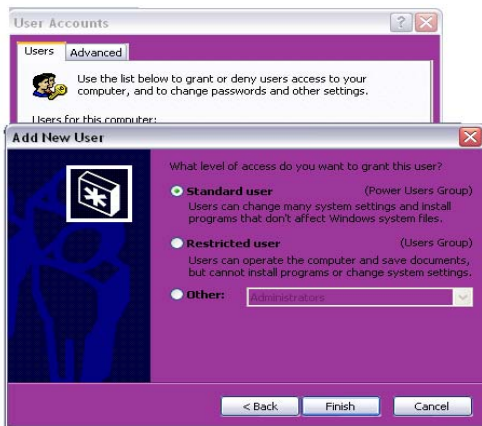


Fig. 4

IDS Quick Start Guide

Trademark Acknowledgements

Ford is a registered trademark of Ford Motor Company.

Copyright Information

IDS Quick Start Guide

©2008 Ford Motor Company All rights reserved

The information, specifications and illustrations in this manual are based on the latest information available at the time of printing. **Ford Motor Company** reserves the right to make changes at any time without notice.