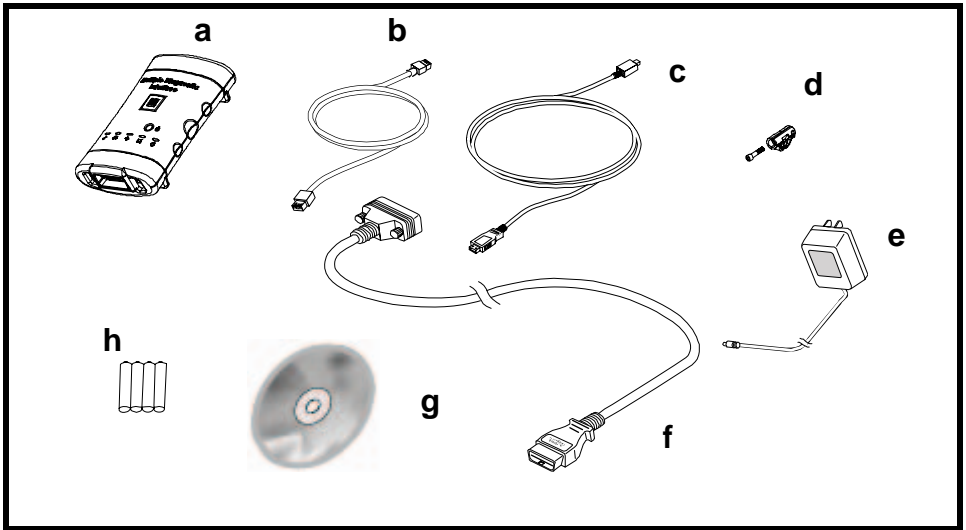


# MULTIPLE DIAGNOSTIC INTERFACE QUICK START GUIDE

## INSTALLING THE GM MULTIPLE DIAGNOSTIC INTERFACE (MDI)

### 1. Confirm the Kit Contents

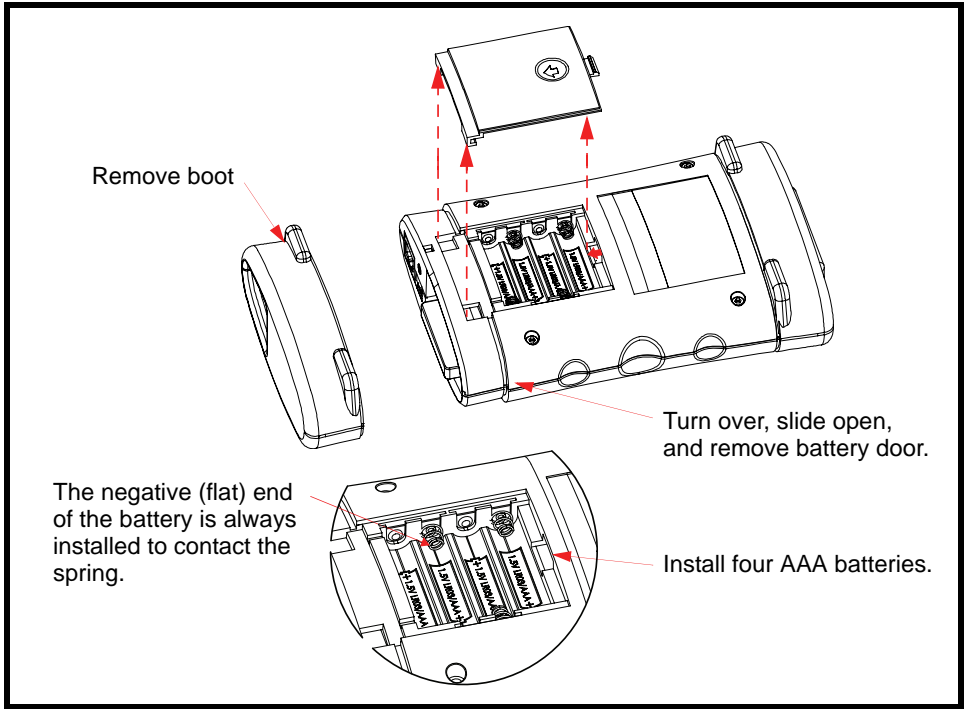


Item	Description	GM Part Number
a	Multiple Diagnostic Interface (MDI)	3000216 or 3000210
b	Ethernet Cable	3000214
c	USB Cable	3000213
d	Cable Keeper	3000215
e	A/C 12-V Adapter	3000229 or 3000212
f	Data Link Connector Cable (J1962 connector)	3000211
g	<i>Multiple Diagnostic Interface User's Guide on CD</i>	
h	AAA Batteries	



## 2. Install the Batteries

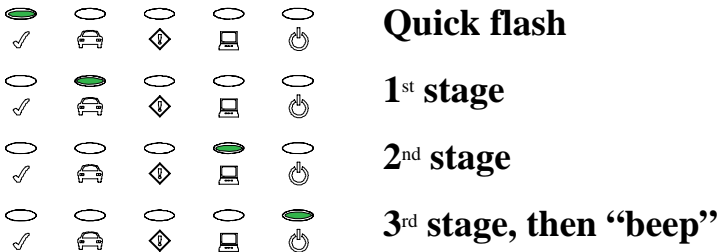
The batteries provide back-up power for momentary power interruptions like those that can occur during engine cranking. You will turn on the MDI in steps 3 and 5 by connecting it to power, using either the A/C 12-V Adapter or a powered vehicle DLC connector.



## 3. Power on Self Test

- a. Turn on the MDI by connecting the A/C 12-V Adapter.

When you first apply power to the MDI, the Power On Self Test (POST) will run. You should observe the following sequence of lights and hear the “BEEP” indicating that the MDI is working properly.



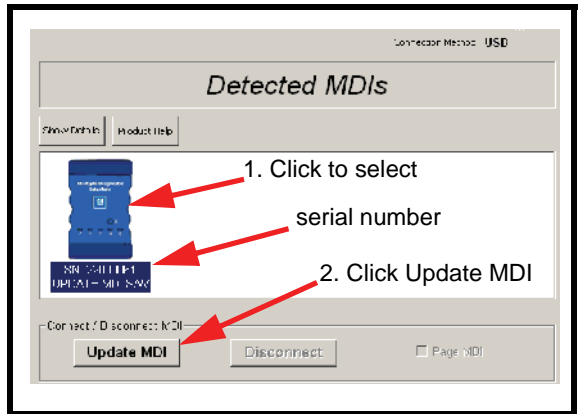
- b. If the Self Test fails or if you have any questions, please refer to the *Multiple Diagnostic Interface User’s Guide* or contact your local customer support center.

## 4. Update the MDI Software

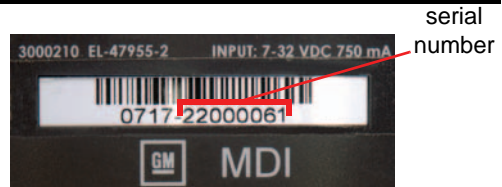
Each MDI will require a software update before using.

- Install the MDI Manager software using the MDI Software Installation CD provided. Future MDI updates can be done from the SPS application in TIS2Web.
- Ensure that the MDI is powered as described in Power on Self Test, above.
- Double-click the MDI Manager icon on your desktop to launch the MDI Manager software.
- Connect the USB Cable to the MDI.
- Connect the USB Cable to your PC. If this is the first time you have used MDI on this USB port, your operating system may require that you acknowledge new hardware.
- The MDI will appear on the **MDI Explorer** tab, as shown. The **MDI Explorer** tab is the main screen for information on connecting your MDIs.

The GM MDI assembly label is located on the back of the unit. The serial number (22000061, in this example) is used to identify the MDI in the software.



- Select the MDI, click the **Update MDI** button, and follow the on-screen instructions to update the MDI software to the latest version.
- When the update is completed, the MDI will reboot and the MDI Manager will return to the **MDI Explorer** tab.



The MDI comes configured for communication to the PC using USB only. The MDI Manager software allows you to set network communication options for wireless and wired ethernet.

**Note:** In order to configure an MDI for communicating on your network you must connect the MDI, via USB, to a PC running MDI Manager software.

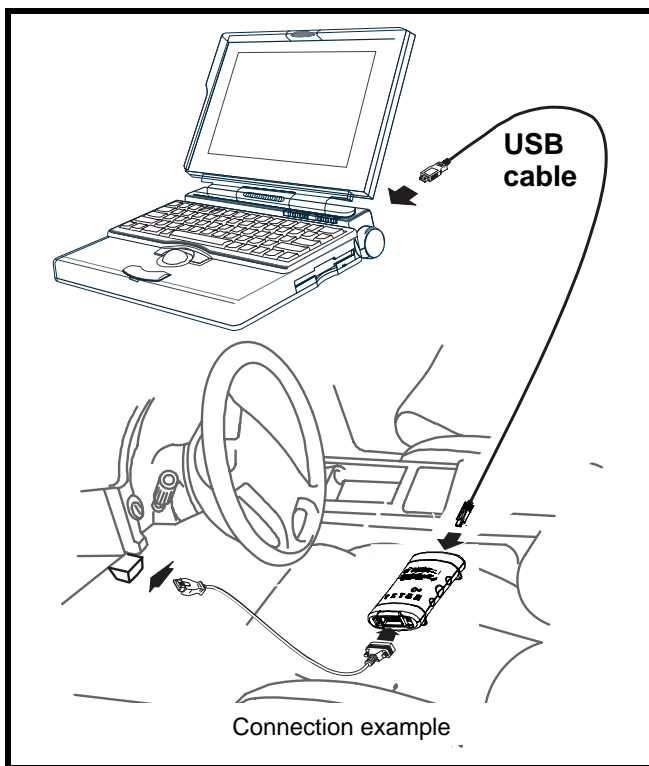
For documentation on the MDI Manager software insert the *Multiple Diagnostic Interface User's Guide* CD into your CD drive and select the *Multiple Diagnostic Interface User's Guide* pdf file. Online help is located within the MDI Manager software and is also available at <http://www.GMDE.net/MDI>.

## 5. Connect to the Vehicle and TIS Host Computer

Before connecting your MDI to the vehicle, it must be updated as described above in step 4, Update the MDI Software. Note that you do not need to start the MDI Manager software in order to use your host computer application.

- a. Using the Data Link Connector cable, connect the MDI to the vehicle's SAE J1962 DLC port. You should see the POST sequence described in Power on Self Test, above.
- b. Connect the MDI to your TIS2Web host computer using USB, wired ethernet, or wireless. (The USB connection is shown below.)  
If your MDI is configured for a wired ethernet connection, connect the MDI to the LAN using the ethernet cable. The ethernet cable must be plugged into a LAN connection such as a router, switch, or hub. Do NOT plug it directly into the PC.  
If your MDI is configured for a wireless connection, it should be detected following completion of POST.

**Note:** The vehicle's SAE J1962 DLC port should be easily accessible from the driver's seat. In most cases, the J1962 DLC port can be found within 3 feet of the steering wheel.



- c. Access the MDI from your TIS2Web host computer application by selecting **J2534 MDI**.
- d. When finished, disconnect the MDI from power and press the **Power** button to turn off battery power.

