

# Quick Start Guide

## Contents

---

<b>Contents</b> .....	<b>1</b>
<b>IDS Quick Start</b> .....	<b>2</b>
STEP 1: Insert VCM DVD into DVD Drive. ....	2
STEP 2: Install IDS by select the IDS icon on the left side of the screen. ....	2
STEP 3: Install Calibration files by selecting the Calibration icon on the dash panel. ....	2
STEP 4: Boot VCM (Vehicle Communication Module). ....	2
STEP 5: Start IDS by double clicking the IDS icon on the desktop ....	2
STEP 6: Start new session or open a previous session to work with ....	2
STEP 7: Diagnose Vehicle.....	3
STEP 8: Connect the VMM for Measurement Tools.....	3
STEP 9: Internet Activation .....	3
STEP 10: Questions.....	3
<b>Steps to setting your user type: IDS requires all users to have Administrator privileges</b> .....	<b>4</b>
Steps to setting your user type as an Administrator:.....	4
Adding a User as Administrator:.....	4

## Quick Start Guide

### IDS Quick Start

#### STEP 1: Insert VCM DVD into DVD Drive.

- If you do not see the screen in fig. 1 within 10 seconds, do the following:
  - o Double click My Computer on your desktop
  - o Double click on your DVD drive
  - o Double click the 'Launch.exe' file

#### STEP 2: Install IDS by select the IDS icon on the left side of the screen.

- Hover over any of the icons to see a brief description of the item to be installed. The description will appear on the right side of the screen (fig. 2).
- After installing IDS, return to dash panel.

#### Dash Panel

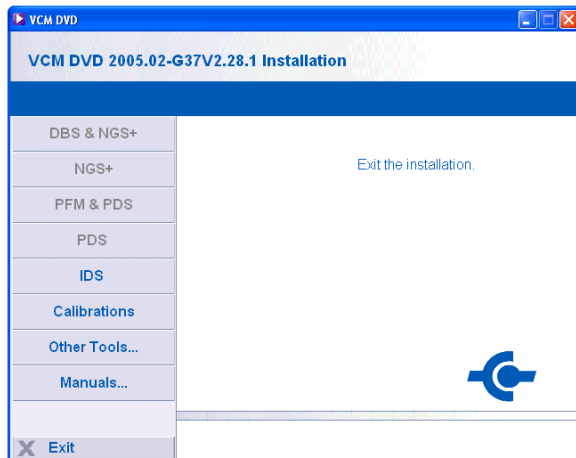


fig.1

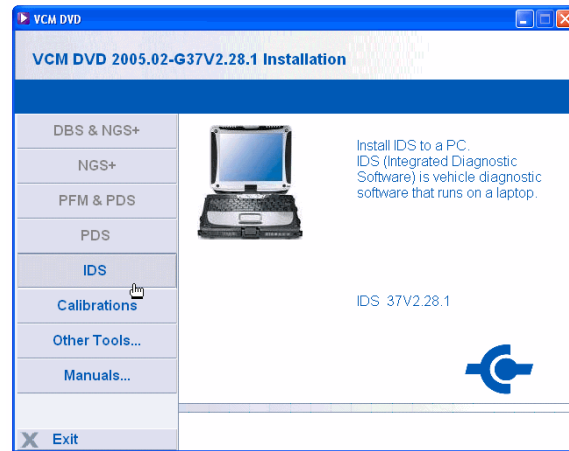


fig.2

#### STEP 3: Install Calibration files by selecting the Calibration icon on the dash panel.

#### STEP 4: Boot VCM (Vehicle Communication Module).

- Connect VCM to vehicle by connecting the 16-pin DLC cable between the vehicle and VCM.
- Connect the VCM to the laptop using the Ethernet-USB Host Cable (H-406). Two H-406 cables are included in IDS kit. Both the VCM and VMM use this cable.



#### STEP 5: Start IDS by double clicking the IDS icon on the desktop.

#### STEP 6: Start new session or open a previous session to work with

- Automatic Vehicle ID – Select the vehicle icon.





## Quick Start Guide

### Steps to setting your user type:

**IDS requires all users to have Administrator privileges**

### Steps to setting your user type as an Administrator:

- Click start
- Control Panel
- Select User Accounts (Fig. 1)
- Create an Account
- Type a name for the new account
- Select Computer administrator and Create Account (Fig. 2)

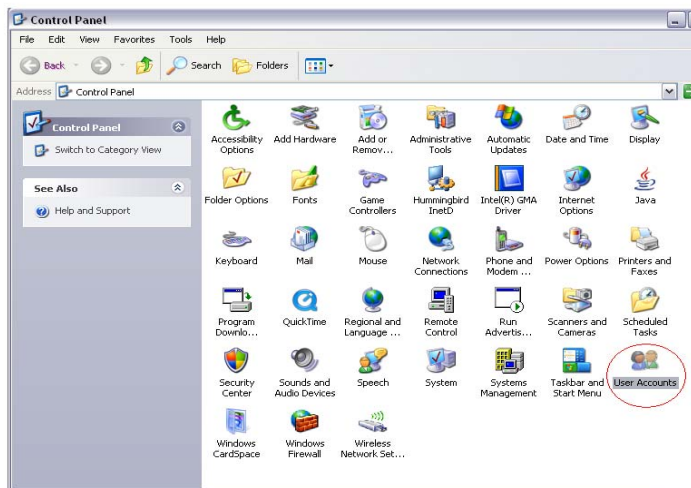


Fig. 1

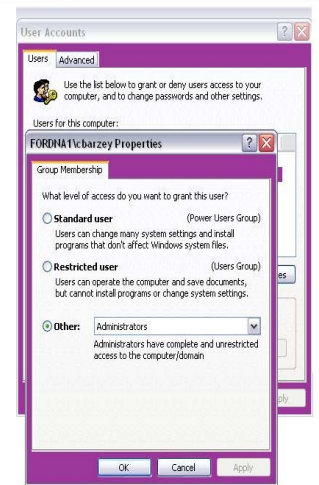


Fig. 2

### Adding a User as Administrator:

- Click Start
- Control Panel
- Select User Accounts (Fig. 1)
- Click Add (Fig. 3a/b)
- Type user name
- Type domain name of computer
- Select Other for Administrator (Fig. 4)

## Quick Start Guide

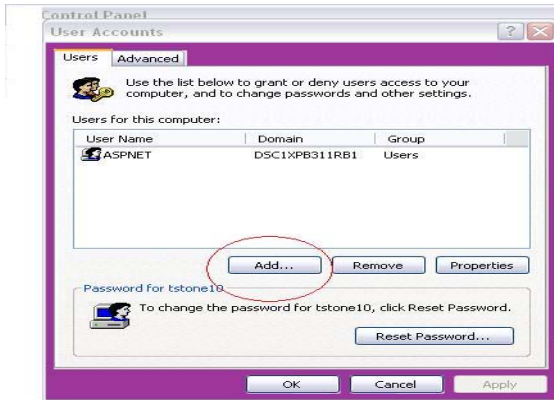


Fig. 3a



Fig. 3b

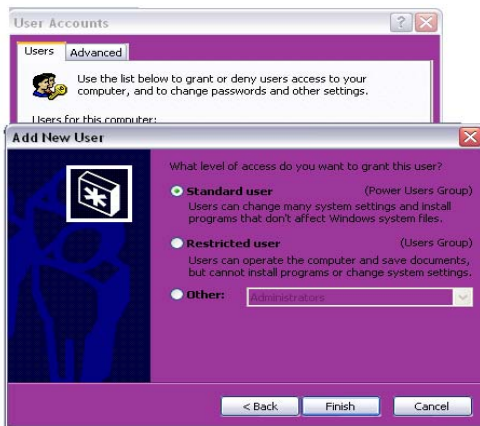


Fig. 4

# IDS Quick Start Guide

---

## **Trademark Acknowledgements**

Ford is a registered trademark of Ford Motor Company.

## **Copyright Information**

IDS Quick Start Guide

©2008 Ford Motor Company All rights reserved

The information, specifications and illustrations in this manual are based on the latest information available at the time of printing. **Ford Motor Company** reserves the right to make changes at any time without notice.