

88890020 Communication Adapter General Information and Installation Instructions

Contents

General

Driver Installation

Utility Application Installation

First Time Use- Preparing for Use

General

The 88890020 communication unit enables PC to vehicle communication. The device connects to the PC via a USB cable or by wireless LAN using the 802.11 b/g standard.

Operating temperature range: -40 to +85°C (-40 to +185°F).
Storage temperature range: -40 to +125°C (-40 to 257°F).

Before the 88890020 communication unit can be used, a driver must be installed on the PC. In addition, a utility application (Admin0020) can be used to check the status of the device and update the firmware if and when needed.

IMPORTANT NOTE: The VCADS application includes the necessary driver and utility application. If using the 88890020 communication adapter on a PC that has VCADS installed, there is no need to install the driver or utility application.

Driver Installation

Locate and double-click **88890020Installer.msi** (located inside the ZIP file available for downloading).

Result:

- USB device drivers and RP1210 dll's will be installed
- V3puwz32.dll is installed in C:\Windows\System32
- V3puwa32.ini is installed in C:\Windows\
- The file rp121032.ini will be created if it does not already exist

After installation of the driver, the 88890020 will be listed among the available communication adapters in the applications on the PC that utilize RP1210A-compliant communication devices.

Utility Application Installation

Locate and double-click **Admin0020Installer.msi** (located inside the ZIP file available for downloading).

Result:

- Files will be placed in \Program Files\Adapter 88890020 Admin
- An item (88890020) will be placed in the Start > Programs menu
- A shortcut icon will be added to the desktop (Admin0020.exe)

First Time Use- Preparing for Use

With the PC powered up, connect the device to the PC's USB port with the included USB cable. A small pop-up window "Found New Hardware" will appear in the system tray area (at the lower right, near the clock display), as shown in figure 1:



Figure 1

A "Found New Hardware Wizard" will begin.

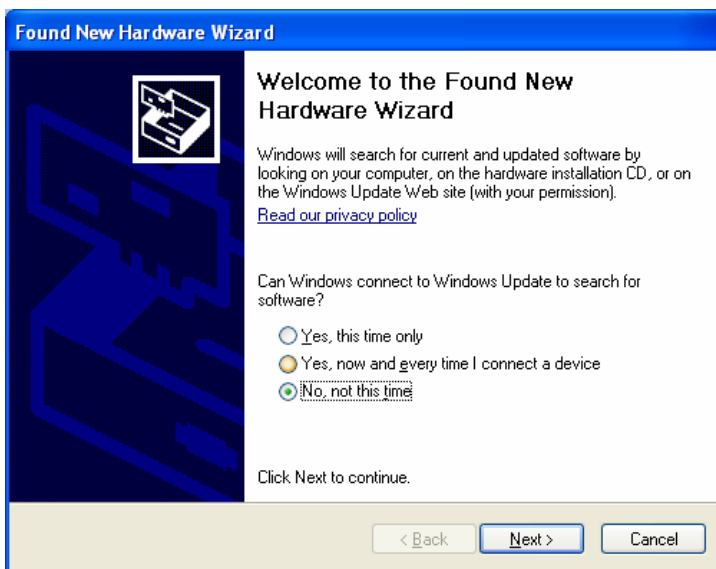


Figure 2

If asked if Windows can connect to Windows Update to search for software, select **No, not this time** and click **Next** to continue (see figure 2).

In the next step of the process, select **Install the software automatically (Recommended)** and click **Next** (see figure 3).



Figure 3

The driver will be located and installed (see figure 4).

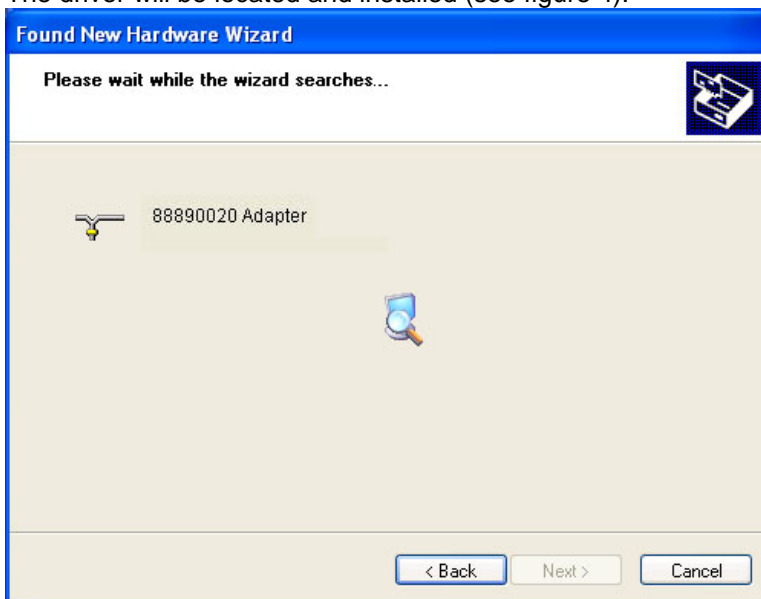


Figure 4

In some cases, a window may appear concerning Windows Logo testing (as shown in Figure 5). If this window appears, click **Continue Anyway**.

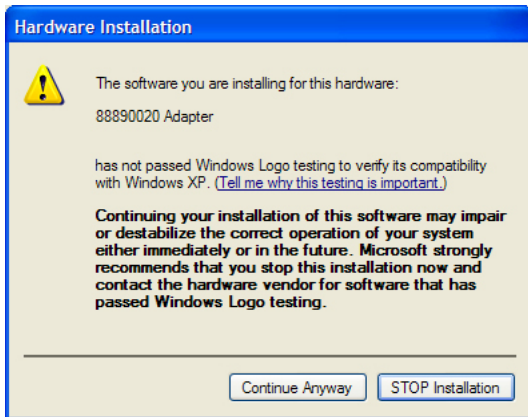


Figure 5

When the installation is finished, a completion window will appear. Click **Finish** to close the window and finish the installation (see figure 6).

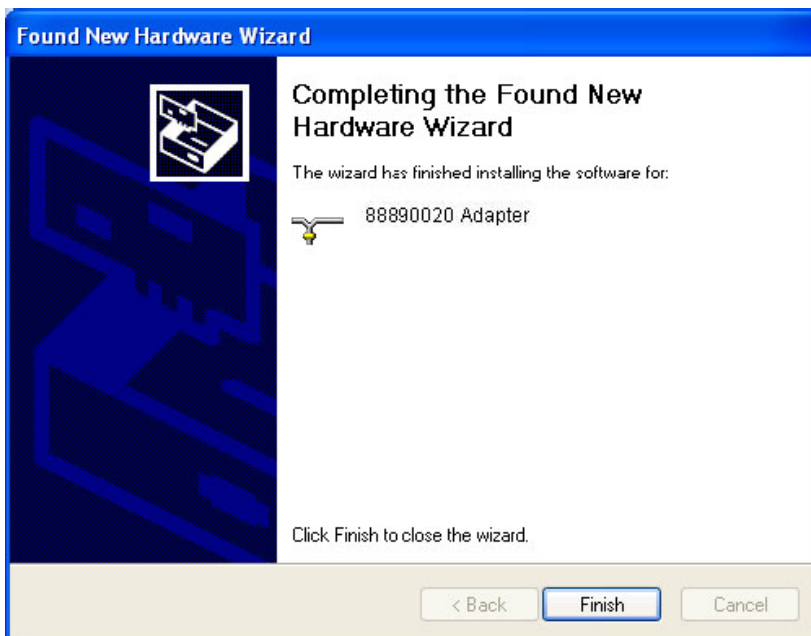


Figure 6

A small pop-up window will appear in the system tray area to inform that the device is installed and ready to use (see figure 7).

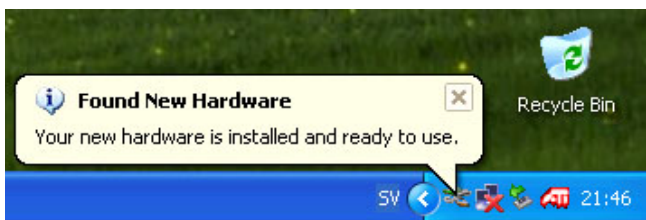


Figure 7

Upon completion of the installation, the “Power USB / Communication” indicator on the device should be illuminated (green). For further information concerning the indicators on the device, refer to *Indicators on the 88890020 Adapter* below.

NOTE: If the PC has more than one USB port, the sequence described above must be completed for each USB port that is to be used with the 88890020 adapter.

Indicators on the 88890020 Adapter

The 88890020 adapter has six indicators of various colors (see figure 8). These indicators show the status of the communication unit. Refer to the table for an overview.

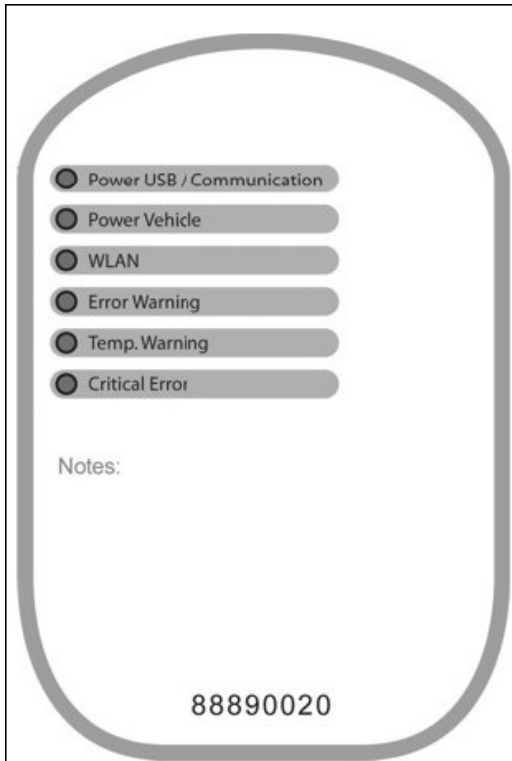


Figure 8

Color	Text on Label	Description
Green	Power USB / Communication	The 88890020 unit is receiving power from the USB port. This will be the case when the device is connected to the PC and the driver has been properly installed as described in the <i>Driver Installation</i> section above. The indicator flashes when communication is taking place. If this indicator and the Critical Error indicator are flashing, the communication unit is lacking internal software (firmware) or the internal software is corrupt.
Green	Power Vehicle	The 88890020 unit is receiving power from the vehicle's diagnostic connector.
Blue	WLAN	WLAN (wireless communication) is active. The indicator shows the strength of the wireless signal.

		<p>Signal strength is indicated by the indicator's illumination ratio between ON and OFF. The more frequently the indicator flashes, the stronger the signal is. Percent ON time:</p> <p>0% = No signal 25% = Poor signal 50% = Moderate signal 75% = Good signal 100% = Excellent signal</p> <p>Example: ON, ON, ON, OFF = 75%</p> <p>If the 88890020 communication unit is configured for WLAN and cannot find an access point, the <i>Error Warning</i> indicator will illuminate. When the communication unit can establish a connection, the <i>Error Warning</i> indicator will turn OFF as long as there are no other faults.</p>
Yellow	Error Warning	<p>There are errors (faults) logged in the 88890020 unit. These faults can be read out using the utility application (Admin0020). Connect the unit to the PC using the USB cable in order to do this. Faults causing the yellow Error Warning indicator are not critical.</p>
Yellow	Temp Warning	<p>The temperature of the 88890020 unit is outside the allowable range. The allowable range of temperature is -40° C (-40° F) to 85° C (185° F). In this situation, remove the communication unit to a location where it can warm or cool to the proper temperature range.</p> <p>Note: In WLAN mode, the allowable temperature is 0°C (32°F) to 45°C (113°F).</p>
Red	Critical Error	<p>There is a critical error (fault) in the 88890020 unit. Faults can be read out using the utility application (Admin0020). If the red <i>Critical Error</i> indicator and the green <i>Power USB / Communication</i> are flashing, the internal software is faulty or missing.</p>

Note: All indicators flash ON for a short time when the 88890020 unit is powered up. This function is a check of the indicators.